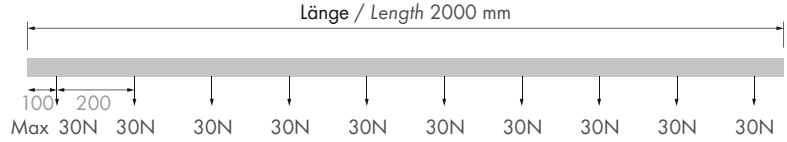
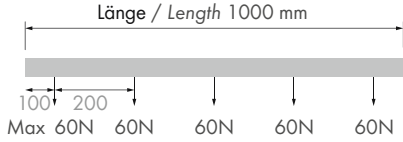


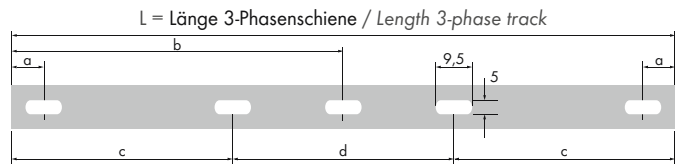
POWERGEAR 3-PHASEN-SCHIENENSYSTEM / POWERGEAR 3-PHASE TRACK SYSTEM

MAXIMALE BELASTUNG / MECHANICAL LOAD DIAGRAM



ABSTAND BEFESTIGUNGSPUNKTE / FIXING POINT DIMENSIONS

L/mm	a/mm	b/mm	c/mm	d/mm
1000	125			
2000	125	998		
3000	125		914	1167

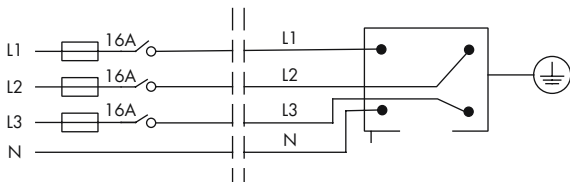


Zur optimalen Aufhängung wird dringend empfohlen, Schienen an jedem der vorgebohrten Löcher mithilfe eines Pendelset oder mit je einer Schraube pro Loch an der Decke zu befestigen.

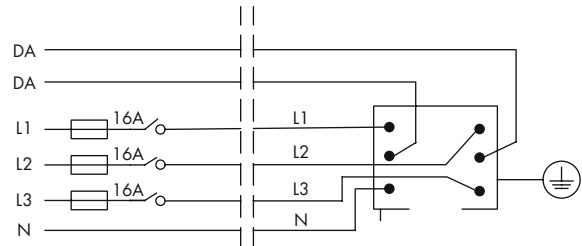
For optimal suspension, it is strongly recommended that tracks be attached to each of the pre-drilled holes using a suspension set or fixing one screw per hole to the ceiling.

2.5

ANSCHLUSSDIAGRAMM / CONNECTING DIAGRAM



3 Phasen 230V 3x16A Max / 3 phase 230V 3x16A Max

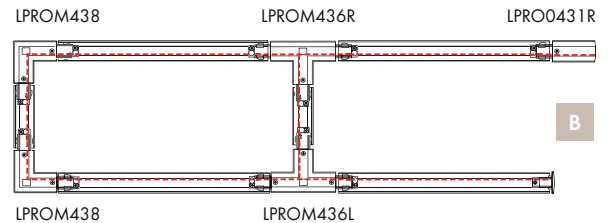
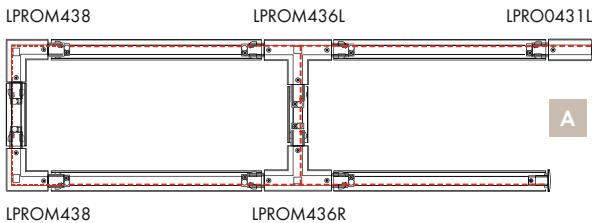


3 Phasen 230V 3x16A Max+DALI signal
3 phase 230V 3x16A Max+DALI signal

BESTELLBEISPIELE / ORDER EXAMPLE

Die rote Linie zeigt den Verlauf des Nullleiters. / Red line indicates the way of the neutral conductor.

Einspeisung L und R – schaltbar / Feed L and R – on/off



Einspeisung L und R – DALI / Feed L and R – DALI

