

## Veiligheid - Sécurité - Sicherheit - Safety



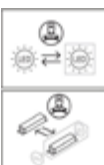
- Uitsluitend voor gebruik binnenshuis.
- Installeer het armatuur enkel in ruimten waar direct contact met water onmogelijk is.
- Seulement pour utilisation en intérieur.
- Cet équipement doit être installé dans des pièces hors de toute projection d'eau.
- For indoor use only.
- This fitting should only be installed in rooms where direct contact with water is impossible.
- Nur für den Innenbereich. Diese Leuchte darf nur in Räumen verwendet werden, in denen ein direkter Kontakt mit Wasser nicht möglich ist.

## IP20

- Beschermd tegen indringen van vaste voorwerpen groter dan 12,5 mm. Geen bescherming tegen vocht.
- Protégé contre les corps solides supérieurs à 12,5 mm. Aucune protection contre humidité.
- Protected against objects  $\geq 12,5$  mm. Not protected against water.
- Geschützt gegen feste Fremdkörper mit Durchmesser ab 12,5 mm. Kein Schutz gegen wasser



- Correcte verwijdering van dit product (elektrische en elektronische afval)
- Élimination correcte de ce produit (déchet d'équipements électriques et électroniques)
- Correct disposal of this product (electrical & electronic equipment waste)
- Korrekte Entsorgung dieses Produkts (elektromüll)



- Dit product bevat een lichtbron met energie-efficiëntieklasse F
- Ce produit contient une source lumineuse de classe d'efficacité énergétique F
- This product contains a light source of energy efficiency class F
- Dieses Produkt enthält eine Lichtquelle der Energieeffizienzklasse F

## GEBRUIKSAANWIJZING MODE D'EMPLOI MONTAGEANLEITUNG INSTALLATION MANUAL

# Smart Tracklights



|           |       |      |         |          |        |          |
|-----------|-------|------|---------|----------|--------|----------|
| SMTL2525W | White | 25 W | 2000 lm | Auto CCT | CRI>90 | Beam 25° |
| SMTL2525B | Black | 25 W | 2000 lm | Auto CCT | CRI>90 | Beam 25° |
| SMTL2540W | White | 25 W | 2000 lm | Auto CCT | CRI>90 | Beam 40° |
| SMTL2540B | Black | 25 W | 2000 lm | Auto CCT | CRI>90 | Beam 40° |
| SMTL3525W | White | 35 W | 3100 lm | Auto CCT | CRI>90 | Beam 25° |
| SMTL3525B | Black | 35 W | 3100 lm | Auto CCT | CRI>90 | Beam 25° |
| SMTL3540W | White | 35 W | 3100 lm | Auto CCT | CRI>90 | Beam 40° |
| SMTL3540B | Black | 35 W | 3100 lm | Auto CCT | CRI>90 | Beam 40° |

Unibright Smart Control App  
Dimmable



RoHS



ErP



IP20

## Waarschuwing – Avertissement - Warnhinweise - Warning

### • WAARSCHUWING !

Om elektrische schokken te voorkomen - Schakel altijd de elektriciteitsvoorziening uit vóór de installatie en het onderhoud.

### • ATTENTION !

Pour éviter un choc électrique - Coupez toujours l'alimentation électrique avant l'installation et la maintenance.

### • WARNING !

To prevent electrical shock - Always switch off electricity supply before installation and maintenance.

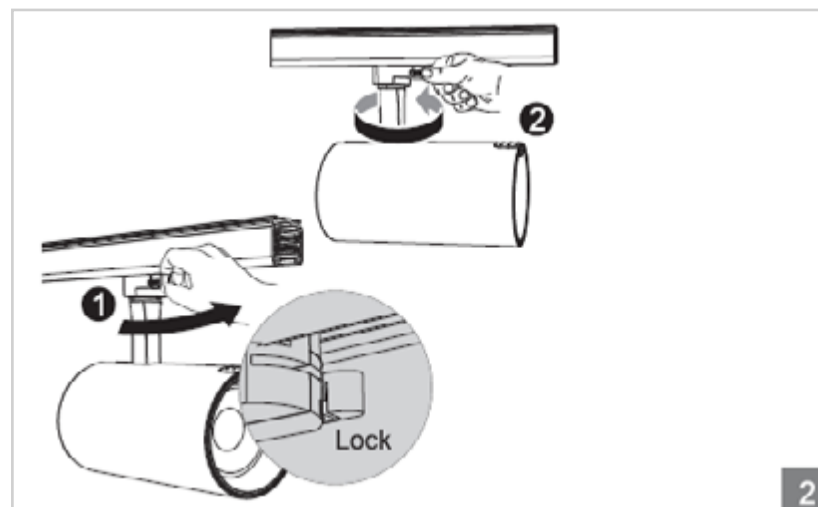
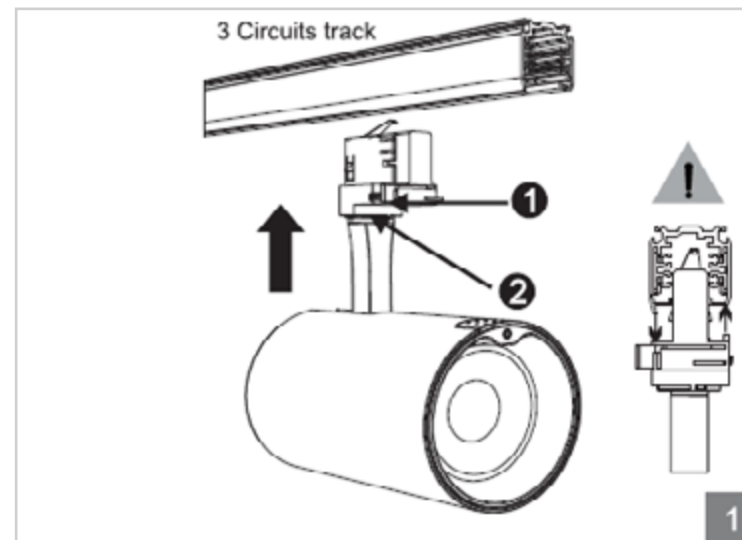
### • WARNUNG !

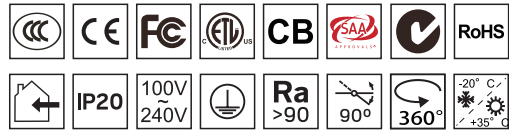
Um einen Stromschlag zu verhindern.- Schalten Sie die Stromversorgung vor der Installation und Wartung ab.

- De elektrische installatie mag alleen door bevoegd personeel worden uitgevoerd volgens de voorschriften voor elektrische en mechanische veiligheid in uw land. Onjuiste plaatsing kan ernstige letsels en/of schade veroorzaken.
- L'installation électrique ne doit être effectuée que par du personnel qualifié, selon les règlements de sécurité électrique et mécanique dans votre pays. Une mauvaise installation peut entraîner des blessures graves et/ou des dommages matériels.
- The electrical installation should be carried out by qualified personal only, according to the regulations for electrical and mechanical safety in your country. Improper installation can result in serious injuries and/or damage to property.
- Die elektrische Installation sollte nur von qualifiziertem Personal nach den Vorschriften für elektrische und mechanische Sicherheit in Ihrem Land durchgeführt werden. Unsachgemäße Montage kann zu schweren Verletzungen und/oder Sachschäden führen.

- Om veiligheidsredenen en garantie is het verboden om wijzigingen aan het apparaat aan te brengen.
- Pour des raisons de sécurité et garantie, il est interdit d'apporter des modifications à l'appareil.
- For safety and guarantee reasons it is prohibited to make any modifications to the unit.
- Aus Sicherheitsgründen und für den Erhalt der Garantie ist es nicht erlaubt Änderungen an dem Gerät durchzuführen.

## Installatie - Instructions d'installation - Installation - Montage





## Smart Tracklights Instructions

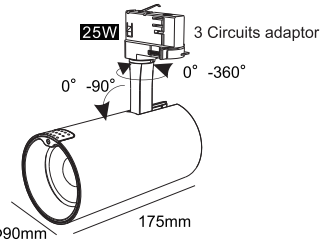
Smart Tracklights is a smart retail lighting solution based on Artificial Intelligence (AI) and Internet of Things (IoT) technologies. Full-spectrum and high-saturation smart track lights analyze commodity information automatically with built-in sensors, and the light spectrum and saturation can be adjusted adaptively. All the lights connected with Bluetooth mesh, while communicating with AWS Cloud through Wi-Fi.

Global e-commerce growth is the biggest challenge the traditional business faces. According to study, "Personalized shopping experience" and "Preview commodity in person before purchase" are the top reasons why shoppers still prefer brick-and-mortar stores. Smart Tracklights retail lighting solution gives shoppers a new shopping experience in brick-and-mortar stores.

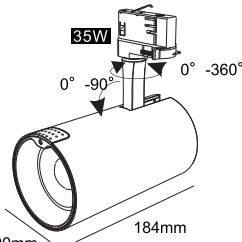
### Instructions



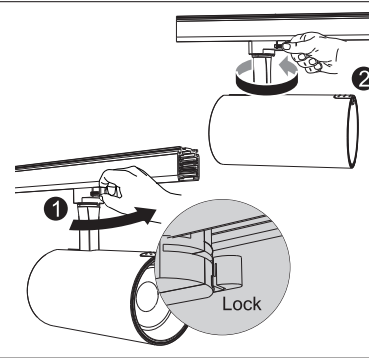
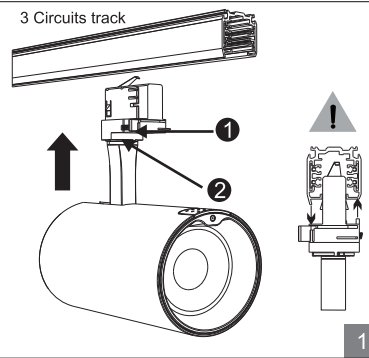
Please follow the sequence of installation step by step. Switch off the electricity before commencing installation



(Model : SMTL2525B SMTL2525W SMTL2540B SMTL2540W)



(Model : SMTL3525B SMTL3525W SMTL3540B SMTL3540W)



### App Overview

The App is designed to configure and set Smart Tracklights over Bluetooth mesh, and the APP communicates with the cloud server via Wi-Fi router.

| Functions                     | Description                                                                                                                                                                                             |
|-------------------------------|---------------------------------------------------------------------------------------------------------------------------------------------------------------------------------------------------------|
| Light setting                 | Three Ways of Light setting: Auto Mode(default), Take a photo, or Customization.                                                                                                                        |
| Light On/Off                  | To switch ON or OFF                                                                                                                                                                                     |
| Colour temperature            | Colour temperature can be tuned from 2700K to 6500K                                                                                                                                                     |
| Brightness adjustment         | To adjust the output brightness from 1% to 100%, default at 100%                                                                                                                                        |
| Software update               | To OTA (Over the Air) update the firmware (software) on the luminaires to the latest version                                                                                                            |
| Energy saving setting         | Not activated by default, desired brightness and waiting period can be preset                                                                                                                           |
| Group setting & Group control | To manage some luminaires in a same group and group control them ON/OFF, group light setting, and energy saving, auto mode, etc.                                                                        |
| Search device                 | Search luminaires according to its name                                                                                                                                                                 |
| Auto Mode                     | Automatically provides the best CCT and color enhancement according to commodities detected by the built-in color sensor, default "ON", and will switch "OFF" automatically once setting light with App |
| Settings reset                | To reset the light to initial settings, and the light will be removed from APP.                                                                                                                         |
| Store management              | To create a store or join a store                                                                                                                                                                       |

### Recommended Distance and Detection interval for Auto Mode

For clothes, the recommended distance between Smart Tracklights tracklight and clothing is 0.8~2.5 meters, and 0.5~1.5 meters for bags. For commodities smaller than bags, recommend using APP "Take photo" or "Customization". To ensure the best lighting effect, please align luminaire's center beam spot on the center of commodity.

Auto Mode detects commodity automatically every 20 minutes by default. Tap "Auto Mode" item to change the time interval. For normal use, recommend set it up by minutes, and for demo and test purpose by seconds.

| Commodities | Recommended distance under Auto mode            |
|-------------|-------------------------------------------------|
| <10cm       | Recommend using "Take photo" or "Customization" |
| 10cm~20cm   | Recommend using "Take photo" or "Customization" |
| 20cm~40cm   | 0.5m~1.5m                                       |
| 40cm~100cm  | 0.8m~2.5m                                       |
| >100cm      | 1.5m~8m                                         |

### Download and Install App

Search "Unibright smart control" from App Store for iOS, or Google Play Store for Android

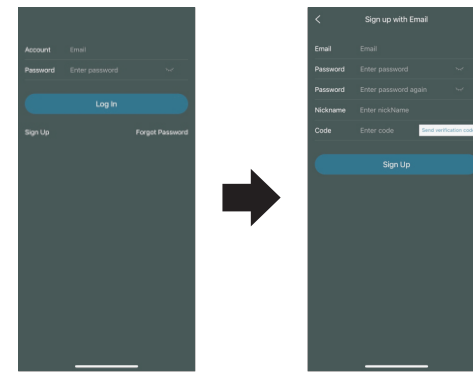
Languages English, French, German and Dutch

App Compatibility  
 iPhone: Requires iOS 13.0 or later  
 iPad: Requires iPadOS 13.0 or later  
 iPod touch: Requires iOS 13.0 or later  
 Mac: Requires macOS 11.0 or later and Mac with the Apple M1 chip  
 Android: V4.4 or later



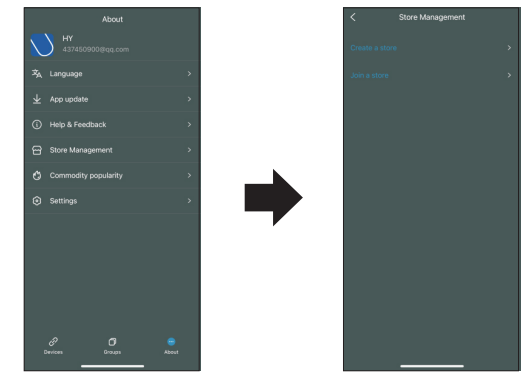
### Sign Up and Login

Tap "Sign Up" to create your account and password. Follow the instruction to complete "Sign Up" and get into "Login" page. Use your account and password to log in.



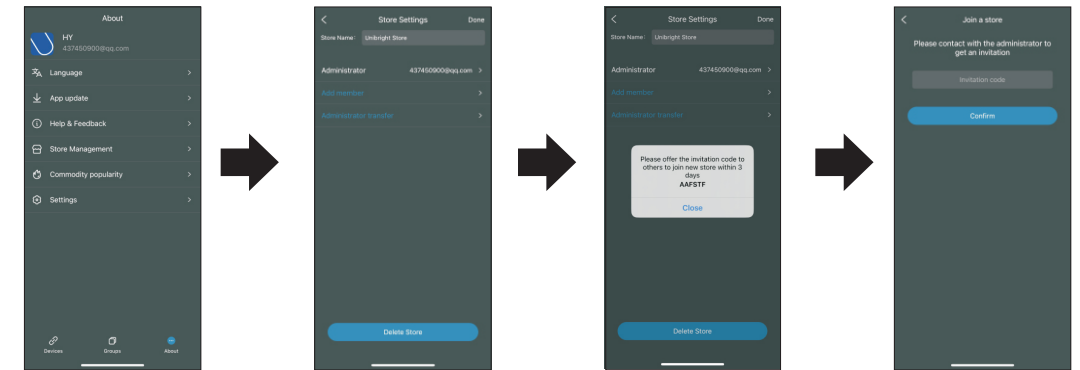
### Create a Store

Create a store before adding any devices for first-time use. Tap "About", choose "Store Management" to create a store. The administrator must create the store first, then invite other members to join.



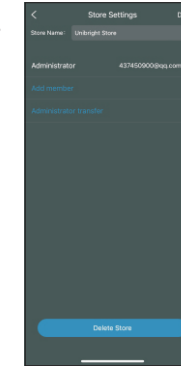
### Share and Join a Store

For administrator, choose the store>tap "Add member">share the invitation code. To join a store: choose "Join a store">input the invitation code and confirm. Tap "Administrator transfer" to transfer the administrator of the store to another member. Note: except the administrator, other members do not have the right to add and set up devices and create groups.



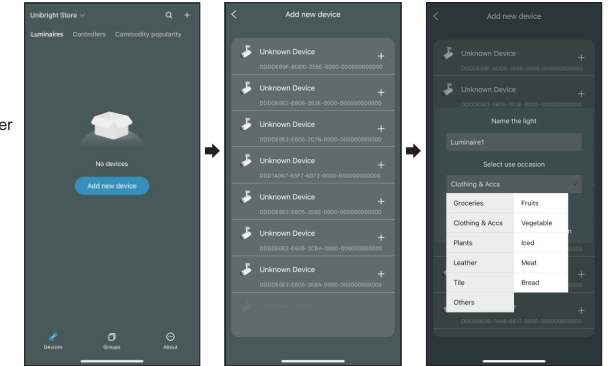
### Administrator transfer

For administrator, choose the store>tap "Administrator transfer">choose a member. Tap "Confirm", the administrator will become a common member.



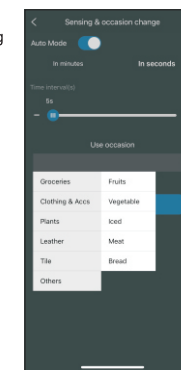
### Add new devices

Step 1: Tap "Add new device" or "+" on the top right of the App to view all the track lights within Bluetooth reach. Step 2: Tap "+" behind "Luminaire", the corresponding track light will flash five times, enter a name for the track light and select a use occasion. Step 3: Tap "Confirm", APP will show if view commodity position right now to check if the commodity is in the center of image. If "Software update" pops up, please update the software first.



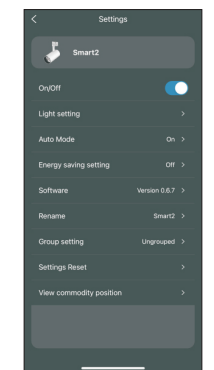
### Select use occasion

1. First-level use occasion has 6 categories: Groceries, Clothing & accs, Plant, Leather, Tile and Others. 2. Groceries has sublevel categories: Fruit, Vegetable, Iced(seafood), Meat, and Bakery. 3. If category not determined while setting up the light, choose "Others" first, then correct it later. 4. Use occasion can be changed by tapping on "Auto Mode".



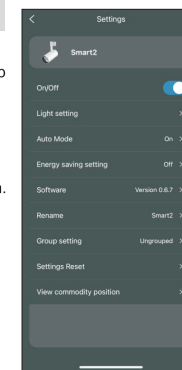
### View commodity position

1. Tap "Right now", choose your Wi-Fi, and enter the password. 2. Tap "View", will see the image of commodity, please make the commodity in the center of the image by moving light or commodity.



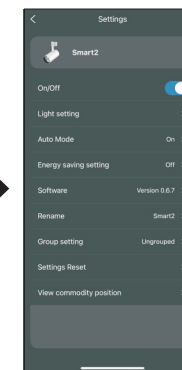
### Software update

1. Tap "Update" on "Software update" popup box. 2. Choose your Wi-Fi and enter the password. 3. Tap "Update" to update the software on the light to latest version. Do not leave until the updating has been finished.



### Settings page

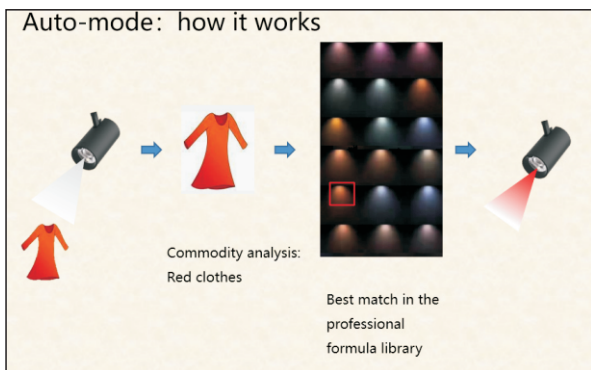
Tap settings icon on the top right corner of light icon on the Devices page to get into "Settings" page. There are three ways to set lighting. 1.Auto mode 2.Take photo 3.Customization





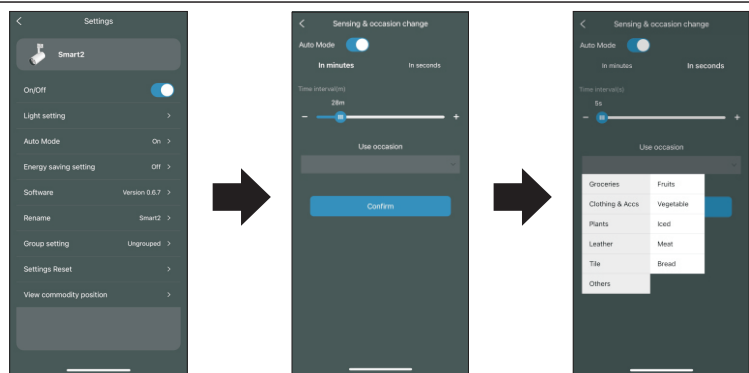
### 1.Auto Mode

Auto mode is on by default. The track light senses commodity information and tune the light automatically according to a professional formula library.  
Using other light setting methods, like Taking photo or Customization, will turn Auto mode off. Turn "Auto Mode" on in APP if use Auto mode again.  
Using Auto mode, the sensor on the light will sense commodity information every 20 minutes by default.



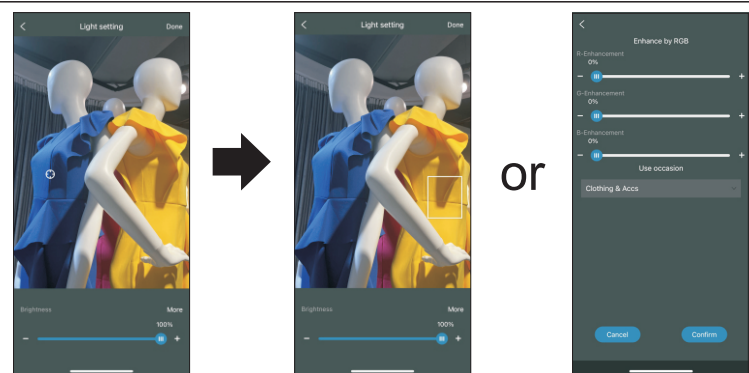
### Change Detection Interval and Use Occasion under Auto Mode

- 1.Detection Interval is 20 minutes by default.
- 2.Use occasion is "Clothing & Accs" by default.
- 3.Tap "Auto Mode" to get into "Sensing & occasion change" page. You can change detection interval and use occasion here.



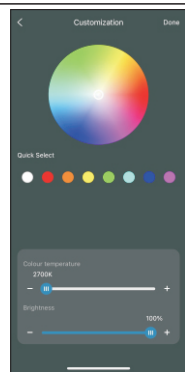
### 2.Take photo

Take a photo of target commodity or choose a photo from albums. "Draw a box" or "tap" on the target colour, and the light will be changed accordingly. Usually drawing a box is suitable for large area of a colour or mixed colour, and taping is more suitable for choosing one kind of small area colour from mixed colours. The brightness can also be adjusted by dragging the slider below. If you are not satisfied with the light, tap "More" to have more choices. Tap "Done" to save the setting, and "Auto Mode" will be turned off automatically.



### 3.Customization

Tap "Customization" on Light setting page. User can tune the colour, colour temperature, saturation and brightness of the light. Tap "Done" to save the setting, and "Auto Mode" will be turned off automatically.



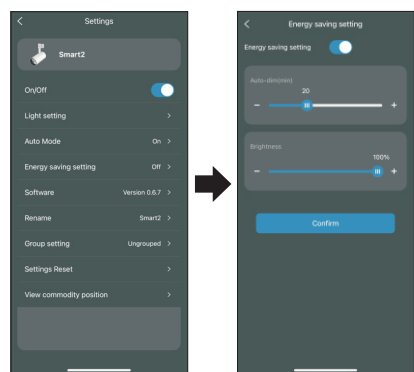
### Brightness

Tap "Brightness" on the Lighting setting page. Drag the slider to adjust brightness of luminaire.



### Energy Saving Setting

If customer(s) be detected by the sensor on the light, the brightness turns to 100%. If no customer(s) be detected, dim the light to the pre-set brightness level after a chosen time. Tap "Confirm" to complete the setting. Return to abandon. Note: This function is off by default. To activate this function, follow the instructions on the right.

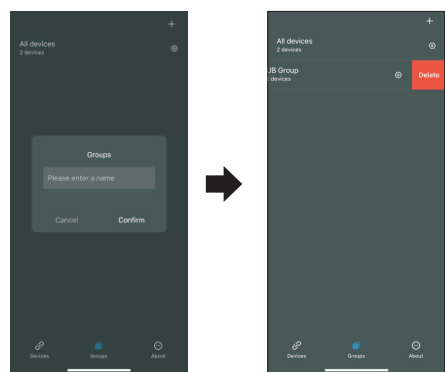


Auto-dim(min): how many minutes after customers leave the light starts to dim. The range is from 1 minute to 60 minutes.

Brightness without customers: what percentage of brightness to illuminate at the standby status. The range is from 0%-100%.

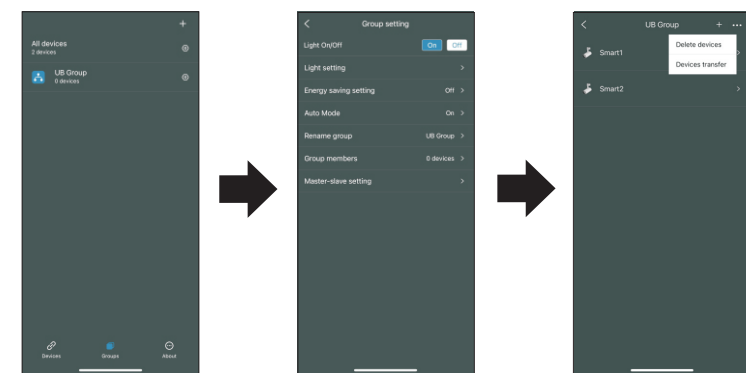
### Create/Delete a Group

Tap "+" > Input a group name and tap "confirm" to add a group. If want to delete a group on the list. Slide left to delete it



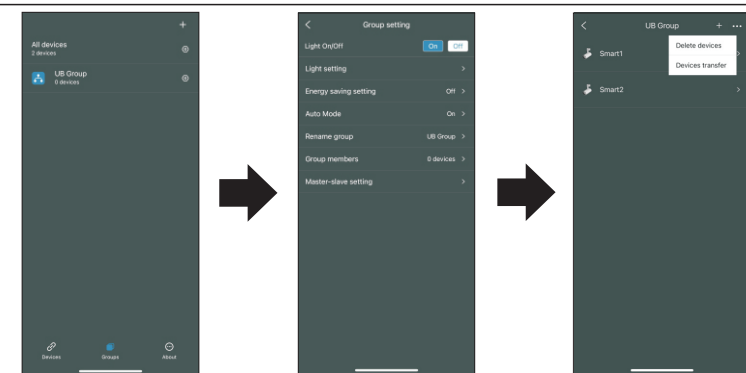
### Group Setting

On the Groups page, tap setting icon to get into Group setting page.  
Light On/Off : Turn on or off all lights in the group by APP. In order to avoid turning on or off too frequently, there is a three-second wait between On and Off.  
Light setting : As the same as the single device, but this item here is for all lights in the group.  
Energy saving setting : As the same as the single device, but this item here is for all lights in the group.  
Auto Mode : As the same as the single device, but this item here is for all lights in the group.  
Rename group: Rename the group.  
Group members : Show how many devices in the group. Tap to show device list.  
Master-slave setting: In a group, one of the Smart tracklights equipped with sensors can be set as the Master device, and all the others will follow its light spectrum. This is extremely important to reduce the budgets costs or where all the lights need to look the same.



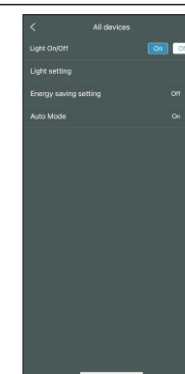
### Group members management

Tap "Group members" to get into device list. Tap "+" to continue to add new devices to the group. Slide left on device list to move the device to another group or delete it from current group. For the multi-operation of deleting and moving, tap "..." in the right top corner.



### All devices control

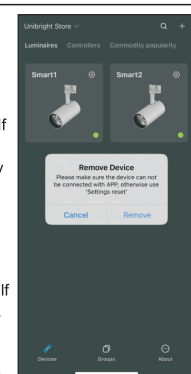
Tap "Groups" icon to get into Groups page. There is an item "All devices" on the top. Tap setting icon into All devices setting page.



Light On/Off : Turn on or off all lights (including grouped and ungrouped) by APP. In order to avoid turning on/off too frequently, there is a three-second wait between On and Off.  
Light setting : As the same as the single device, but this item here is for all lights (including grouped and ungrouped).  
Energy saving setting : As the same as the single device, but this item here is for all lights (including grouped and ungrouped).  
Auto Mode : As the same as the single device, but this item here is for all lights (including grouped and ungrouped).

### Remove a device from APP

Tap and hold on the light icon, and a dialog box pops up. Choose "Remove" to remove the light from APP, and choose "Cancel" to abandon. Note: Please make sure the light can be connected with APP. If yes, please remove it with "Settings reset". If you remove the device this way, the only way you can get the device back is by resetting it physically and adding it back again.



Seven steps to reconnect devices removed from APP mistakenly, or can not be connected.

1. powered off. 2. wait half a second. 3. powered on. 4. wait half a second. 5. powered off. 6. wait half a second. 7. powered on.

Note: This operation is only for the lights which can not be connected with APP. Do not do this operation for other devices, otherwise the settings will be lost.

### Status Indication & Troubleshooting

#### Status of the Smart Tracklights

| Status                      | Indication                         |
|-----------------------------|------------------------------------|
| Device Connecting           | The light will be flashing 5 times |
| Device Connected Failed     | APP shows Time Out                 |
| Device Connected Successes  | The light will be flashing 5 times |
| Light changes automatically | The APP shows "Auto Mode" on       |

#### The first things to check if the light does not work well:

| Problems            | Indications Status               | Solution                                                                                                                                                                                                                                                                                  |
|---------------------|----------------------------------|-------------------------------------------------------------------------------------------------------------------------------------------------------------------------------------------------------------------------------------------------------------------------------------------|
| Connection Failures | Time Out                         | 1, Make sure the power is on.<br>2, Bluetooth out of range, please move closer.<br>3, The Bluetooth on your smartphone or iPad is off.<br>4, If still not solved, please contact UNI-BRIGHT.                                                                                              |
| Mismatches          | Lighting doesn't match commodity | 1, Please put commodity in the center of light beam.<br>2, Turn "Auto Mode" on, or set light with APP.<br>3, Color sensor on the light doesn't work well if the commodity is too far or too small, please use APP to set the light.<br>4, If still not solved, please contact UNI-BRIGHT. |

### App modifications

| iOS       |                                                          |            |
|-----------|----------------------------------------------------------|------------|
| Version # | Modifications                                            | Date.      |
| 1.1.2     | First release                                            | 2023-03-22 |
| 1.1.3     | Remove the function of group OTA and fix some bugs       | 2023-04-02 |
| 1.1.4     | Add network detect and commodity popularity              | 2023-04-16 |
| 1.1.5     | 1. Add commodity popularity 2. Add master-slave of group | 2023-04-25 |

| Android   |                                                    |            |
|-----------|----------------------------------------------------|------------|
| Version # | Modifications                                      | Date.      |
| 1.0.30    | First release                                      | 2023-04-04 |
| 1.0.31    | Remove the function of group OTA and fix some bugs | 2023-04-06 |
| 1.0.33    | Add network detect and commodity popularity        | 2023-04-25 |
| 1.0.34    | Fix some bugs                                      | 2023-05-22 |

UNI-BRIGHT nv  
Belcrownlaan 13-Q • 2100 Antwerpen - Belgium • T +32 (0)3 641 61 40 • F +32 (0)3 645 18 31  
• www.unibright.be

Questions & Feedback? Any questions & feedback on the Smart Tracklights luminaires or APP. Please email [info@unibright.be](mailto:info@unibright.be)

Copyright©2023 UNI-BRIGHT nv Co.,Ltd. All rights reserved.

